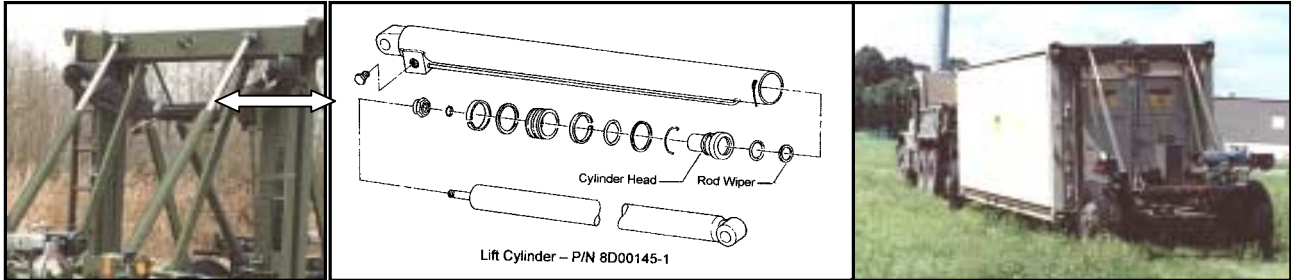


Lift Cylinder Upgrade - M1022-A1 Dolly Set



Available product upgrades for Lift Cylinders (P/N 8D00145-1) for fielded M1022-A1 Dolly Set Mobilizers include new aluminum cylinder heads and rigid metal-encased rod wipers.

Fielded M1022-A1 systems have experienced some corrosion inside the cylinder head area when dolly sets are stored for long periods of time. This corrosion can be transferred to the cylinder rod if the dolly set is stored with the rods in the extended position, causing a rough texture on the rod surface. If the rough cylinder rod is retracted into the cylinder body without being cleaned, it can dislodge the cylinder rod wiper (P/N 8D00051-15) from its slot in the cylinder head. Once dislodged, the rod wiper cannot be reinstalled in the cylinder head without disassembly of the cylinder.

Although the cylinder can still operate with the rod wiper dislodged, foreign matter on the cylinder rod will eventually cause a failure of the internal seals. For this reason, Change 3 to TM 9-2330-390-14&P calls for the dolly set to be stored with the cylinders fully retracted and for the rods to be wiped clean before being retracted into the cylinder body.

The new Cylinder Head P/N CD00051-13 is identical to the original head 8D00051-13 except made from Aluminum (7075-T651) to eliminate corrosion problems in this area. The head can be retrofit onto existing lift cylinders when they are disassembled for maintenance or seal changes.

The new metal-encased rod wiper CD00051-15 is more rigid than the original wiper to resist being pulled from its groove in the cylinder head by rough rod surfaces. The rod wiper can be installed onto existing lift cylinders with or without the new aluminum head.

Once a cylinder is disassembled for installation of the new metal-encased rod wiper, a complete seal change-out is suggested. The new Seal Kit P/N CD00051-17 includes the metal-encased Rod Wiper along with all other seals contained in the lift cylinder. Instructions for seal change-out can be found in the Dolly Set Technical Manual (see paragraph 5-7, page 5-20 of TM 9-2330-390-14&P).

The new cylinder upgrades can be ordered directly from CDK Mobile Systems Inc. (Cage 1NHH8) as follows:

| Item | P/N | Description | Qty per Dolly Set |
|------|------------|--------------------|-------------------|
| 1 | CD00051-13 | Head, Cylinder | 4 |
| 2 | CD00051-15 | Wiper, Rod | 4 |
| 3 | CD00051-17 | Seal Kit, Cylinder | 4 |
| | | includes: | |
| | CD00051-15 | Wiper, Rod | 1 |
| | 8D00051-16 | Seal, Rod | 1 |
| | 8D00051-12 | Seal, Backup | 1 |
| | 8D00051-8 | Packing, Preformed | 1 |
| | 8D00051-5 | Packing, Preformed | 2 |
| | 8D00051-6 | Seal, Piston | 1 |
| | 8D00051-11 | Packing, Preformed | 1 |

IMPAC Cards are gladly accepted by CDK. Call today and ask for an IMPAC Fax order form.